

DESCRIPTION:

Thermodynamic steam trap with full stainless steel internals. Best suited for high pressure line drains with low to medium condensate loads.

SALIENT FEATURES:

- Complete stainless steel internals ensure better mechanical & corrosion resistance properties.
- Condensate entry below the disc, concentric to the disc/seat ensures a clean & parallel lift of the disc with reference to the seat, eliminating localized wear & tear.
- The disc & seat are fully hardened by a special hardening process, to withstand continuous, prolonged operation.
- Perfect shut off, no steam loss.
- Robust, maintenance free, fully guaranteed.

SIZES : DN 15, 20, 25

CONNECTIONS : Socket weld / Butt weld

Non IBR¹ / IBR approved.

LIMITING CONDITIONS:

PMA: Max. allowable pressure	250 bar (g)
TMA: Max. allowable temp.*	537°C
Maximum operating back pressure at the outlet should not exceed 50% of the inlet pressure	
Max. operating pressure	175 bar (g)
Minimum differential pressure for satisfactory operation	5 bar
Cold hydro test pressure	500 bar (g)

* Can be supplied for higher temp. on request.

INSTALLATION:

The trap will operate in any position but the preferred installation is in a horizontal position with the disc seat cover on top. Full port isolating valves should be installed upstream and downstream of the trap. After the first 24 hours of service the cover nuts should be checked for tightness.



MAINTENANCE:

The disc and seat should be inspected for wear.

All worn or damaged parts should be replaced with new spares. The disc seat is not replaceable. Ensure that all gaskets are replaced every time the trap is dismantled.

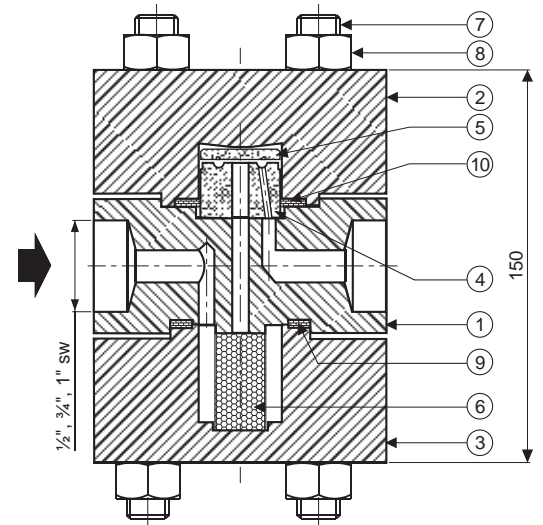
IMPORTANT :

- To prevent water logging, it is required that the line be drained using the bypass, at start-up.
- The trap should be installed as close as possible to the equipment to be drained.
- For new pipe lines, ensure that the lines are properly flushed, prior to fitting the trap.

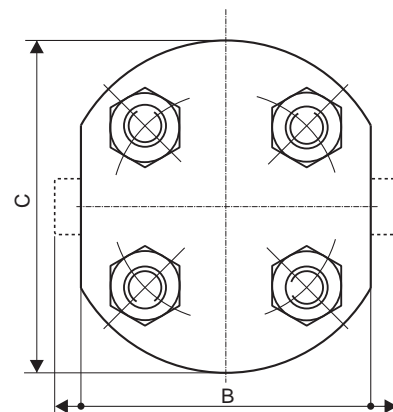
¹Indian Boiler regulations

MATERIAL:

NO.	PART	MATERIAL	QTY. (Nos.)
1.	BODY	ASTM A182 Gr. F22 Cl.3	01
2.	SEAT COVER	ASTM A182 Gr. F22 Cl.3	01
3.	STRAINER COVER	ASTM A182 Gr. F22 Cl.3	01
4.	DISC SEAT	ASTM A 681 Gr. D2	01
5.	DISC	ASTM A 681 Gr. D2	01
6.	STRAINER	AISI 304	01
7.	STUD	ASTM A193 Gr. B16	08
8.	NUT	ASTM A194 Gr. 7	08
9, 10.	GASKET	SWG SS304 with Graphite	02


DIMENSIONS - Nominal in mm

END CONNS.	SIZE	A	B	C	Wt.
Socket Weld	DN15,20,25	150	109	120	12.25 kg
Butt Weld	DN15,20,25	150	120	125	11.65 kg


AVAILABLE SPARES:

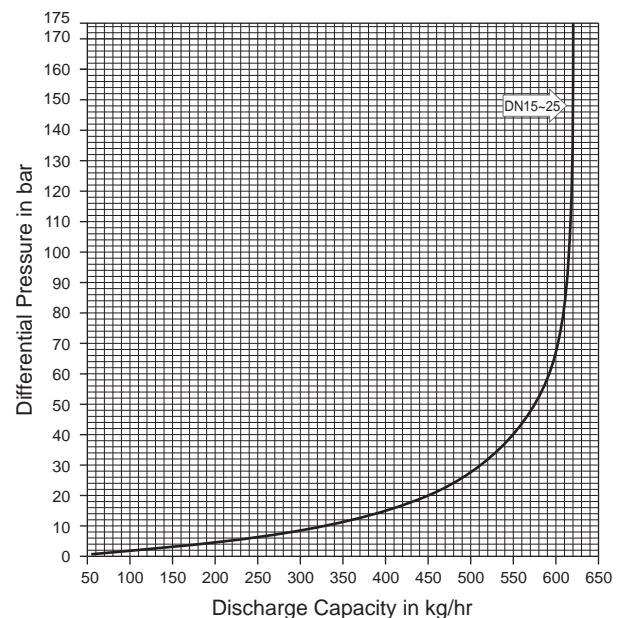
Set of internal working parts:- Disc, Set of gaskets, Strainer screen (packet of 5).

HOW TO ORDER:

PT14 DN25 SWIBR

ORDERING INFORMATION:

- 1) Inlet Pressure in bar (g)
- 2) Back Pressure in bar (g)
- 3) Operating Temperature in °C
- 4) Condensate Load in kg/hr
- 5) Size & Model
- 6) End Connections
- 7) IBR / Non-IBR



Local regulations may restrict the use of this product below the conditions quoted. Limiting conditions refer to standard connections only. In the interest of development and improvement of the product, we reserve the right to change the specifications without prior notice.