

### DESCRIPTION:

PT62 float and thermostatic (internal air vent) steam traps are designed for draining condensate from all types of low and medium pressure steam heating and process equipment.

Typical applications include unit heaters, heat exchangers, driers and jacketed vessels.

Horizontal installation.

### AVAILABLE TYPES:

PT 62 - with thermostatic air vent

PT 62S- SLR (with steam lock release)

PT 62C - with thermostatic air vent and SLR.

### FEATURES:

Modulating discharge.

Discharges condensate at steam temperature.

Excellent air venting (by thermostatic air vent).

USE: Saturated and superheated steam.

SIZES: NPS 1/2, 3/4, 1 (DN15, 20, 25)

CONNECTIONS: Screwed (NPT, BSPT, BSP)  
Flanged\*/ Socket Weld

\*End connection flanges of ASTM A105 forged carbon steel are welded on.

Non IBR<sup>1</sup> / IBR

### LIMITING CONDITIONS:

PMA: Max allowable pressure	450 psig	32 kg/cm <sup>2</sup> (g)
TMA: Max. allowable temperature	750 °F	400 °C
PMO: Max <sup>1</sup> operating pressure	350 psig	25 kg/cm <sup>2</sup> (g)
TMO: Max. operating temperature	Sat.	Sat.
Body shell design rating	600@RT	42@RT
Cold hydro test pressure	900 psig	63 kg/cm <sup>2</sup> (g)



### INSTALLATION:

Horizontal installation with flow from left to right.

The trap should be installed horizontally below the drain point of the equipment in a position such that the float arm is in a horizontal plane and the float rises and falls vertically, with the flow direction as indicated on the cover.

The word 'TOP' on the nameplate indicates the top side of the trap.

Max. differential pressure range:

PT62-65 : 65 psi (4.5 kg/cm<sup>2</sup>)

PT62-145 : 145 psi (10 kg/cm<sup>2</sup>)

PT62-200 : 200 psi (14 kg/cm<sup>2</sup>)

PT62-350 : 350 psi (25 kg/cm<sup>2</sup>)

### TRAP DISCHARGE CAPACITY IN lbs/hr

MODEL	SIZE	DIFFERENTIAL PRESSURE (psi)												
		7	15	28.5	42.5	65	100	125	145	175	200	250	300	350
PT62-65	1/2" ~ 1"	1850	2080	2540	2990	3685	----	----	----	----	----	----	----	----
PT62-145	1/2" ~ 1"	1330	1440	1670	1915	2255	2840	3300	3540	----	----	----	----	----
PT62-200	1/2" ~ 1"	935	1000	1120	1245	1420	1725	1970	2090	2400	2585	----	----	----
PT62-350	1/2" ~ 1"	450	615	770	880	1000	1050	1090	1150	1175	1200	1230	1255	1275

Recommended safety factor: steady condns. 1.5 - 2; fluctuating condns. 2-3

### TRAP DISCHARGE CAPACITY IN kg/hr

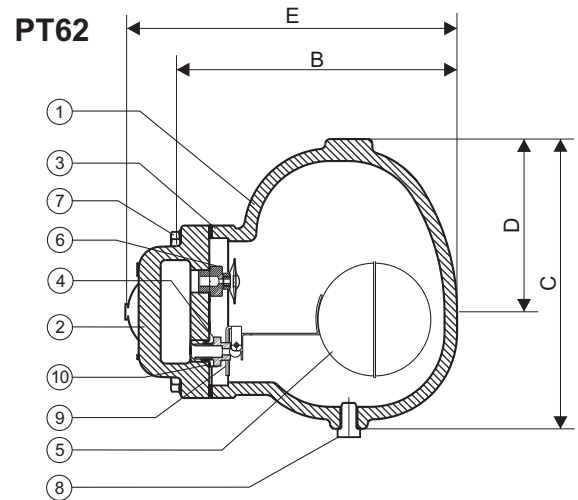
MODEL	SIZE	DIFFERENTIAL PRESSURE (kg/cm <sup>2</sup> )												
		0.5	1	2	3	4.5	7	9	10	12.5	14	17.5	21	25
PT62-4.5	1/2" ~ 1"	840	945	1155	1360	1675	----	----	----	----	----	----	----	----
PT62-10	1/2" ~ 1"	605	655	760	870	1025	1290	1500	1605	----	----	----	----	----
PT62-14	1/2" ~ 1"	425	455	510	565	645	785	895	950	1090	1175	----	----	----
PT62-25	1/2" ~ 1"	200	280	350	400	454	475	495	525	535	545	560	570	580

Recommended safety factor: steady condns. 1.5 - 2; fluctuating condns. 2-3

<sup>1</sup>Indian Boiler Regulations

**MATERIAL:**

NO.	PART	MATERIAL	QTY.(Nos.)
1.	BODY	ASTM A216 Gr. WCB	01
2.	COVER	ASTM A216 Gr. WCB	01
3.	GASKET	CAF / Non CAF	01
4.	VALVE SEAT	13% CR STEEL / AISI 410/420	01
5.	BALL FLOAT & LEVER ASSY.	AISI 304	01
6.	AIR VENT	STAINLESS STEEL	01
7.	BOLT	ASTM 193 Gr. B7	04
8.	DRAIN PLUG	CARBON STEEL	01
9.	BRACKET ASSY.	AISI 304	01
10.	GASKET	COPPER	01
11.	SLR UNIT	AISI 304	01


**DIMENSIONS - Nominal in inches (mm)**

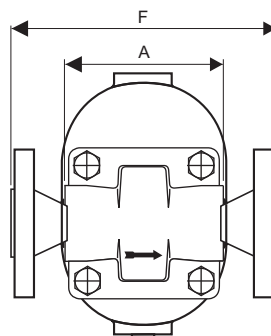
SIZE	A	B	C	D	E	F - Flanged		
						#150	#300	PN40
$\frac{1}{2}$ "	4.75 (120)	7.35 (187)	6.70 (170)	4.35 (111)	8.65 (220)	7.70 (195)	8.10 (205)	7.10 (180)
$\frac{3}{4}$ "	4.75 (120)	7.35 (187)	6.70 (170)	4.35 (111)	8.65 (220)	7.90 (200)	8.25 (210)	7.10 (180)
1"	4.75 (120)	7.35 (187)	6.70 (170)	4.35 (111)	8.65 (220)	8.25 (210)	8.65 (220)	7.10 (180)

**WEIGHTS - approx. in lbs (kg)**

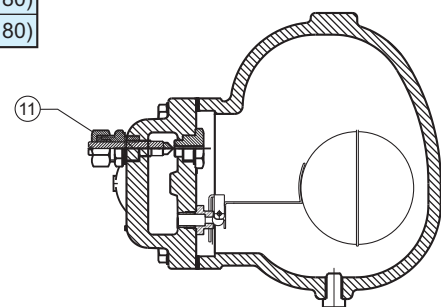
SIZE	SCREWED/ SW ENDS	FLANGED ENDS		
		#150	#300	PN40
$\frac{1}{2}$ "	17.6 (8)	24.2 (11)	25.3 (11.5)	25.3 (11.5)
$\frac{3}{4}$ "	17.6 (8)	26.0 (11.8)	27.5 (12.5)	27.5 (12.5)
1"	17.6 (8)	26.3 (12)	28.8 (13)	28.8 (13)

**AVAILABLE SPARES:**

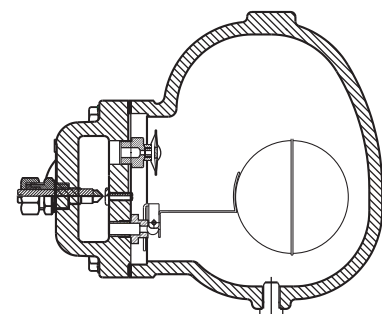
Valve Seat, Ball Float & Lever Assy.,  
 Aivent, Gaskets.



PT62S STEAM LOCK RELEASE (SLR)



PT62C THERMOSTATIC AIR VENT + SLR



Local regulations may restrict the use of this product below the conditions quoted. Limiting conditions refer to standard connections only. In the interest of development and improvement of the product, we reserve the right to change the specifications without prior notice.

### DESCRIPTION:

PT62 float and thermostatic (internal air vent) steam traps are designed for draining condensate from all types of low and medium pressure steam heating and process equipment.

Typical applications include unit heaters, heat exchangers, driers and jacketed vessels.

Horizontal installation.

### AVAILABLE TYPES:

PT 62 - with thermostatic air vent

PT 62S- SLR (with steam lock release)

PT 62C - with thermostatic air vent and SLR.

### FEATURES:

Modulating discharge.

Discharges condensate at steam temperature.

Excellent air venting (by thermostatic air vent).

USE: Saturated and superheated steam.

SIZES: NPS 1½, 2 (DN40, 50)

CONNECTIONS: Screwed (NPT/BSPT/BSP)  
Flanged\* / Socket weld

\* End connection flanges of ASTM A105 forged carbon steel are welded on.

Non IBR<sup>1</sup> / IBR

### LIMITING CONDITIONS:

PMA: Max allowable pressure	450 psig	32 kg/cm <sup>2</sup> (g)
TMA: Max. allowable temperature	800 °F	426 °C
PMO: Max. operating pressure	350 psig	25 kg/cm <sup>2</sup> (g)
TMO: Max. operating temperature	Sat.	Sat.
Body shell design rating	750 @RT	52@RT
Cold hydro test pressure	1125 psig	78 kg/cm <sup>2</sup> (g)



### INSTALLATION:

Horizontal installation with flow from left to right.

The trap should be installed horizontally below the drain point of the equipment in a position such that the float arm is in a horizontal plane and the float rises and falls vertically, with the flow direction as indicated on the cover. The arrow on the nameplate should be pointing vertically upwards.

Max. differential pressure range:

PT62-65 : 65 psi (4.5 kg/cm<sup>2</sup>)

PT62-145 : 145 psi (10 kg/cm<sup>2</sup>)

PT62-200 : 200 psi (14 kg/cm<sup>2</sup>)

PT62-350 : 350 psi (25 kg/cm<sup>2</sup>)

### TRAP DISCHARGE CAPACITY IN lbs/hr

MODEL	SIZE	DIFFERENTIAL PRESSURE (psi)												
		7	15	28.5	42.5	65	100	125	145	175	200	250	300	350
PT62-65	1½" ~ 2"	6655	7205	8340	9460	11135	---	---	---	---	---	---	---	---
PT62-145	1½" ~ 2"	4920	5910	6430	6820	7525	8875	10550	11275	---	---	---	---	---
PT62-200	1½" ~ 2"	4280	4995	6115	6545	6995	7975	9085	9615	10625	11430	---	---	---
PT62-350	1½" ~ 2"	3390	3920	4910	5240	5615	5890	7490	7905	8985	9425	11420	12380	12775

Recommended safety factor: steady condns. 1.5 - 2; fluctuating condns. 2-3

### TRAP DISCHARGE CAPACITY IN kg/hr

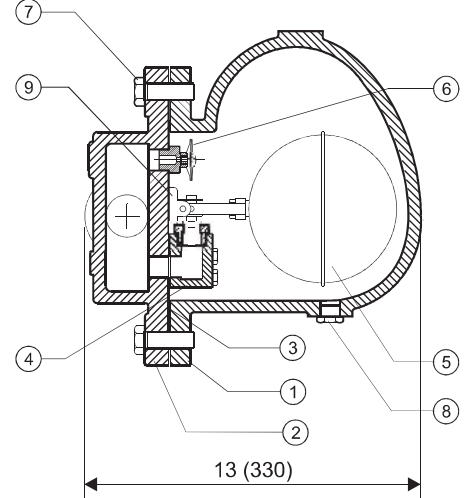
MODEL	SIZE	DIFFERENTIAL PRESSURE (kg/cm <sup>2</sup> )												
		0.5	1	2	3	4.5	7	9	10	12.5	14	17.5	21	25
PT62-4.5	1½" ~ 2"	3020	3270	3785	4295	5055	---	---	---	---	---	---	---	---
PT62-10	1½" ~ 2"	2235	2685	2920	3095	3415	4030	4790	5120	---	---	---	---	---
PT62-14	1½" ~ 2"	1945	2270	2775	2970	3175	3220	4125	4370	4825	5190	---	---	---
PT62-25	1½" ~ 2"	1540	1780	2230	2380	2550	2675	3400	3590	4080	4280	5185	5620	5800

Recommended safety factor: steady condns. 1.5 - 2; fluctuating condns. 2-3

<sup>1</sup>Indian Boiler Regulations

**MATERIAL:**

NO.	PART	MATERIAL	QTY.(Nos.)
1.	BODY	ASTM A216 Gr. WCB	01
2.	COVER	ASTM A216 Gr. WCB	01
3.	GASKET	CAF / Non CAF	01
4.	VALVE SEAT	13% CR STEEL / AISI 410/420	01
5.	BALL FLOAT & LEVER ASSY.	AISI 304	01
6.	AIR VENT	STAINLESS STEEL	01
7.	BOLT	ASTM 193 Gr. B7	06
8.	DRAIN PLUG	CARBON STEEL	01
9.	BRACKET ASSY.	AISI 304	01
10.	SLR UNIT	AISI 304	01

**PT62**

**DIMENSIONS - Nominal in inches (mm)**

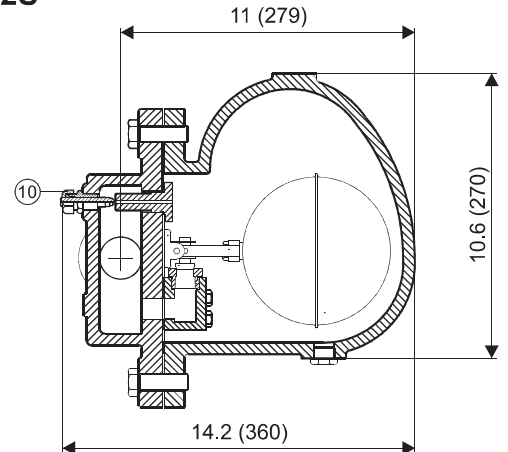
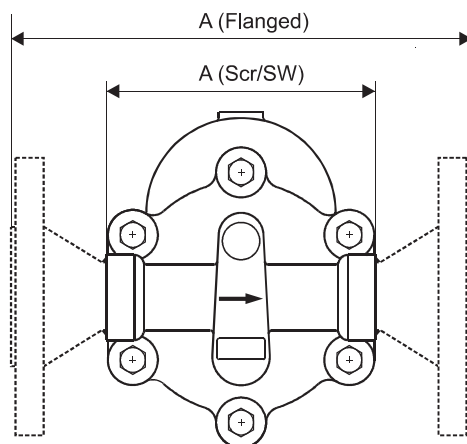
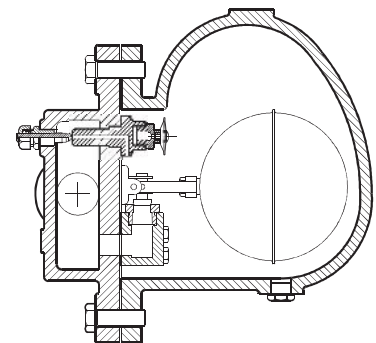
SIZE	A			
	SCR / SW	#150	#300	PN40
1 1/2"	9.90 (252)	13.80 (350)	14.35 (365)	15.75 (400)
2"	9.90 (252)	13.80 (350)	14.35 (365)	15.75 (400)

**WEIGHT**

Screwed/SW		Flanged	
68 lbs	31 kg	77 lbs	35 kg

**AVAILABLE SPARES:**

Valve Seat, Ball Float & Lever Assy., Air Vent, Gaskets.

**PT62S**

**PT62C**


DIMENSIONS - Nominal in inches (mm)

Local regulations may restrict the use of this product below the conditions quoted. Limiting conditions refer to standard connections only. In the interest of development and improvement of the product, we reserve the right to change the specifications without prior notice.