

**DESCRIPTION:**

Cast iron float and thermostatic (internal air vent) steam traps are designed for draining condensate from all types of low and medium pressure steam heating and process equipment.

Typical applications include unit heaters, heat exchangers, driers and jacketed vessels.

Horizontal installation.

**AVAILABLE TYPES:**

PT 65 - with thermostatic air vent

PT 65S- SLR (with steam lock release)

PT 65C - with thermostatic air vent and SLR.

**FEATURES:**

Modulating discharge.

Discharges condensate at steam temperature.

Excellent air venting (by thermostatic air vent).

**USE:** Saturated and superheated steam.

**SIZES:** DN25

**CONNECTIONS:** Screwed (NPT, BSPT, BSP)

**LIMITING CONDITIONS:**

PMA: Max allowable pressure	16 bar(g)
TMA: Max. allowable temperature	220 °C
PMO: Max operating pressure	14 bar(g)
TMO: Max. operating temperature	220 °C
Cold hydro test pressure	32 bar(g)



**INSTALLATION:**

Horizontal installation with flow from left to right

The trap should be installed horizontally below the drain point of the equipment in a position such that the float arm is in a horizontal plane and the float rises and falls vertically, with the flow direction as indicated on the cover.

The word 'TOP' on the nameplate indicates the top side of the trap.

Max. differential pressure range:

PT65-4.5 : 4.5 bar

PT65-10 : 10 bar

PT65-14 : 14 bar

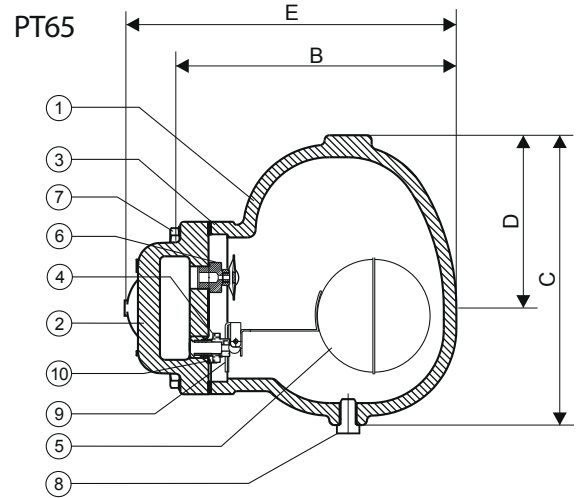
**TRAP DISCHARGE CAPACITY IN kg/hr**

MODEL	SIZE	DIFFERENTIAL PRESSURE (bar)																	
		0.5	1.0	1.5	2.0	3.0	4.0	4.5	5.0	6.0	7.0	8.0	9.0	10.0	11.0	12.0	13.0	14.0	
PT 65-4.5	DN25	840	945	1049	1155	1358	1569	1673	-----	-----	-----	-----	-----	-----	-----	-----	-----	-----	-----
PT 65-10	DN25	604	654	710	760	870	974	1024	1079	1185	1290	1394	1499	1603	-----	-----	-----	-----	-----
PT 65-14	DN25	425	454	480	510	565	620	645	675	730	785	839	895	949	1004	1064	1120	1174	-----

Recommended safety factor: steady condns. 1.5 - 2; fluctuating condns. 2-3

**MATERIAL:**

NO.	PART	MATERIAL	QTY.(Nos.)
1.	BODY	CAST IRON	01
2.	COVER	CAST IRON	01
3.	GASKET	CAF / Non CAF	01
4.	VALVE SEAT	13% CR STEEL / AISI 410/420	01
5.	BALL FLOAT & LEVER ASSY.	AISI 304	01
6.	AIR VENT	STAINLESS STEEL	01
7.	BOLT	ASTM A193 Gr. B7	04
8.	DRAIN PLUG	CARBON STEEL	01
9.	BRACKET ASSY.	AISI 304	01
10.	GASKET	COPPER	01
11.	SLR UNIT	AISI 304	01



**DIMENSIONS - Nominal in mm**

SIZE	A	B	C	D	E	F	Wt.
DN25	120	188	170	105	215	245	7 kg

**AVAILABLE SPARES:**

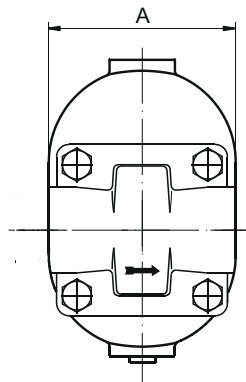
Valve Seat, Ball Float & Lever Assy.,  
Airvent, Gaskets.

**HOW TO ORDER:**

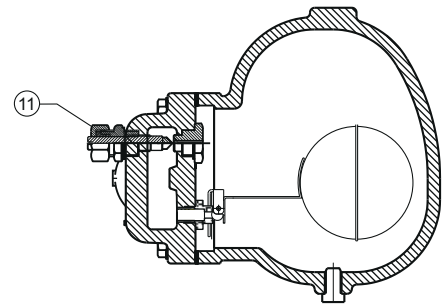
PT65-4.5 DN25 BSP

**ORDERING INFORMATION:**

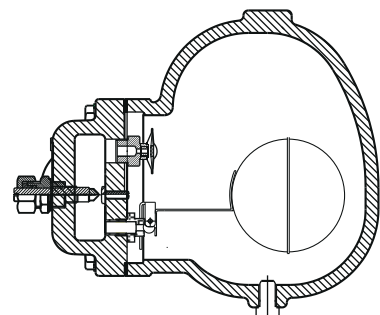
- 1) Inlet Pressure in bar (g)
- 2) Back Pressure in bar (g)
- 3) Operating Temperature in °C
- 4) Condensate Load in kg/hr
- 5) Size & Model
- 6) End Connections.



PT65S STEAM LOCK RELEASE (SLR)



PT65C THERMOSTATIC AIR VENT + SLR



Local regulations may restrict the use of this product below the conditions quoted. Limiting conditions refer to standard connections only. In the interest of development and improvement of the product, we reserve the right to change the specifications without prior notice.